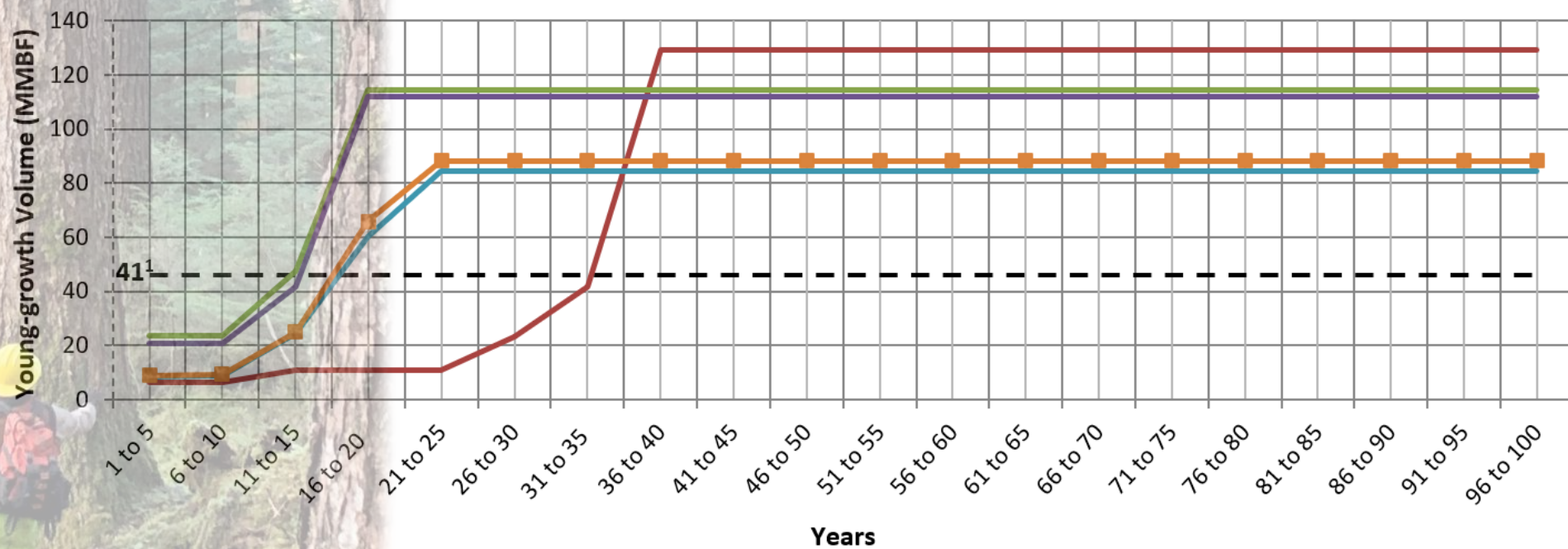


What is the
OneUSDA
Southeast Alaska
Sustainability
Strategy (SASS)?

On **July 15, 2021**, the U.S. Department of Agriculture (USDA) [announced the new Southeast Alaska Sustainability Strategy](#) to support a diverse economy, enhance community resilience, and conserve natural resources in Southeast Alaska. The strategy to be undertaken on the Tongass National Forest and in Southeast Alaska includes four primary components:

1. ***Ending large-scale old-growth timber sales on the Tongass National Forest and focusing management resources to support forest restoration, recreation, and resilience, including for climate, wildlife habit and watershed improvement.***
2. Restoring the 2001 Roadless Rule protections.
3. Engaging meaningfully with Tribal Nations.
4. Identifying short- and long-term opportunities for investments that reflect the diverse opportunities and needs in the region.

Young-growth Transition and Projected Timber Sale Quantity (PTSQ)



--- Young-growth Transition Volume

— ALT 3

— ALT 1 (No Action)

— ALT 4

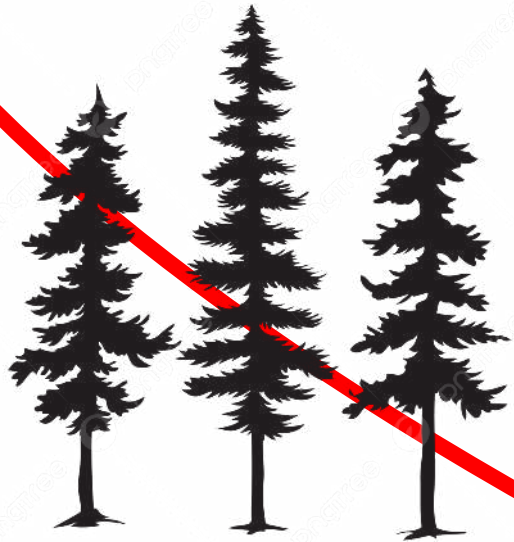
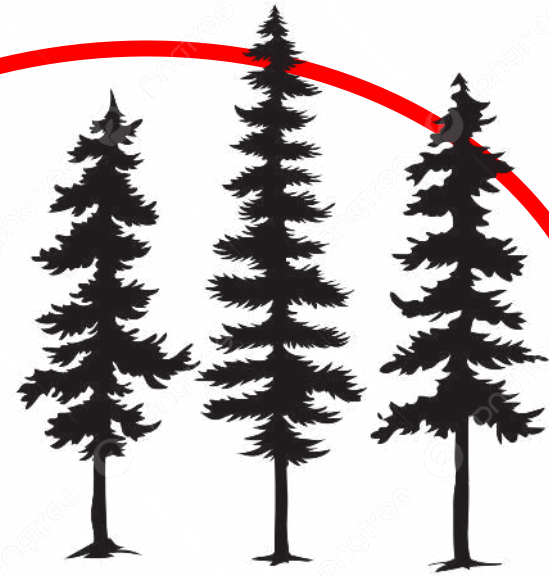
— ALT 2 (Proposed Action)

— ALT 5 (Tongass Advisory Committee)

This *SASS Forest Management* strategy describes an integrated approach to shift from a singular objective of timber management to integrated management actions that include terrestrial and aquatic restoration, young-growth timber management, and small and micro old-growth timber sales. Within the framework of the 2016 Tongass Land and Resource Management Plan (Forest Plan), the Forest Service will intentionally design integrated forest management projects that support a diverse economy, enhance community resilience, conserve natural resources, and retain climate-resilient forests.



Silviculture



SASSfm Project Areas
20231024PublicView -
SASSfmProjectAreas20231024



Integrated Resource Management on the Tongass National Forest

Young Growth Basin And Watershed Score

Relationship

↑ YoungGrowthBasinScore

→ HUCScore

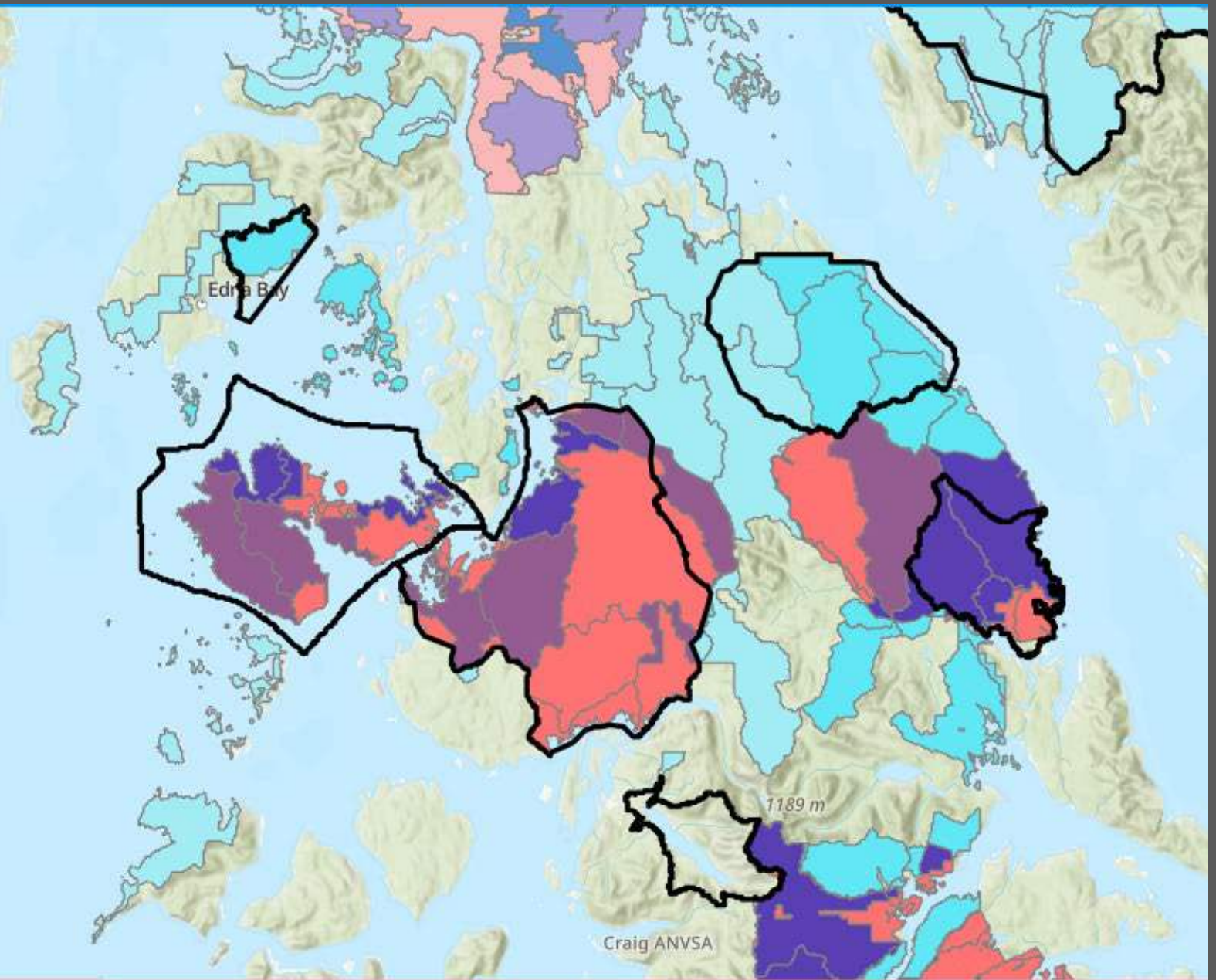
High - Low

High - High



Low - Low

Low - High





Integrated Resource Management on the Tongass National Forest

Impaired Fish Passage

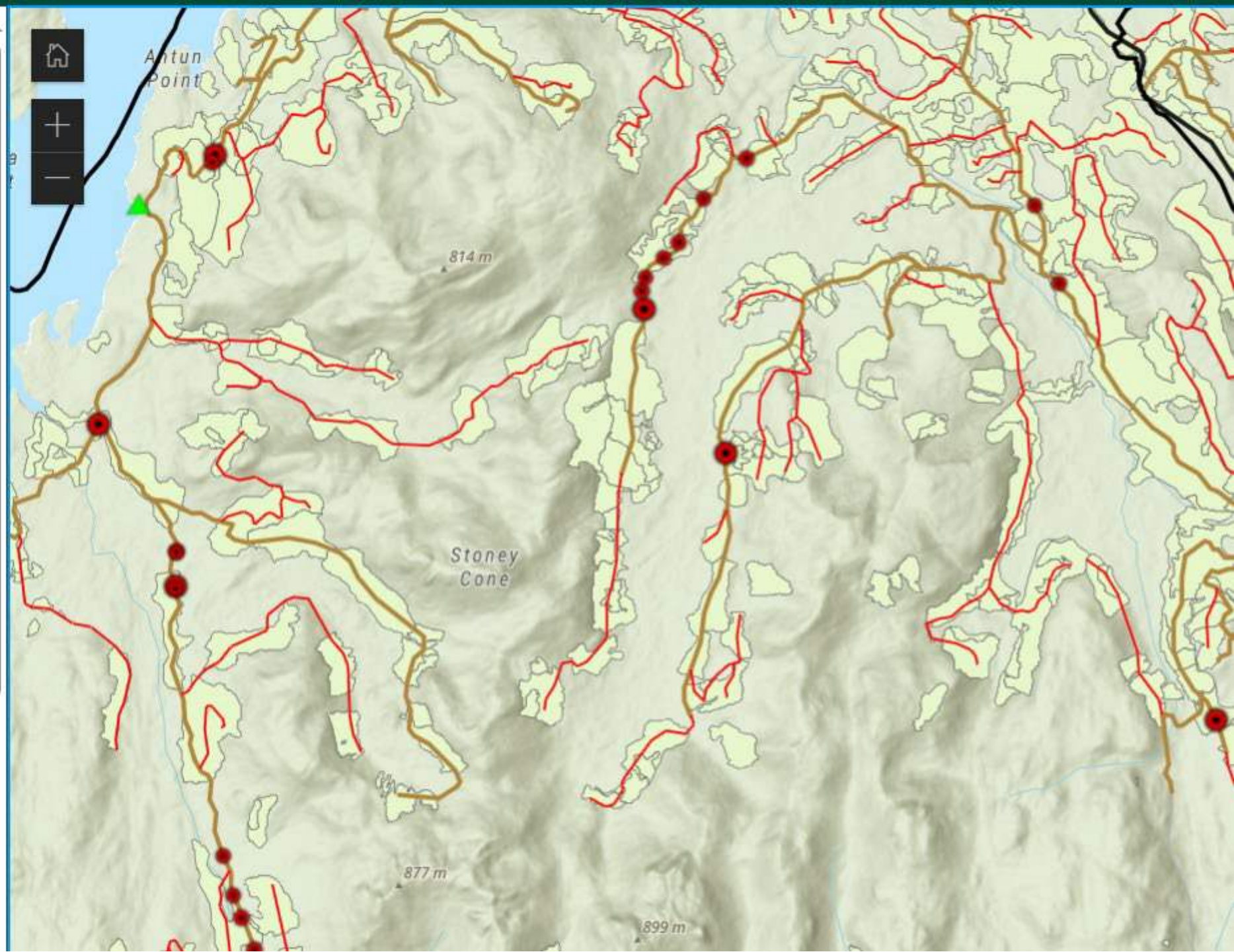
Remediation score

- High
- Medium
- Low

Marine Access Facility



Roads on the Tongass National Forest



In-Stream Restoration Opportunity



Riparian Thinning Opportunity



Deer Habitat Restoration Opportunity



Unthinned Stand 15-30 years old



Young Growth Harvest Opportunity



Marine Access Facility



Roads on the Tongass National Forest

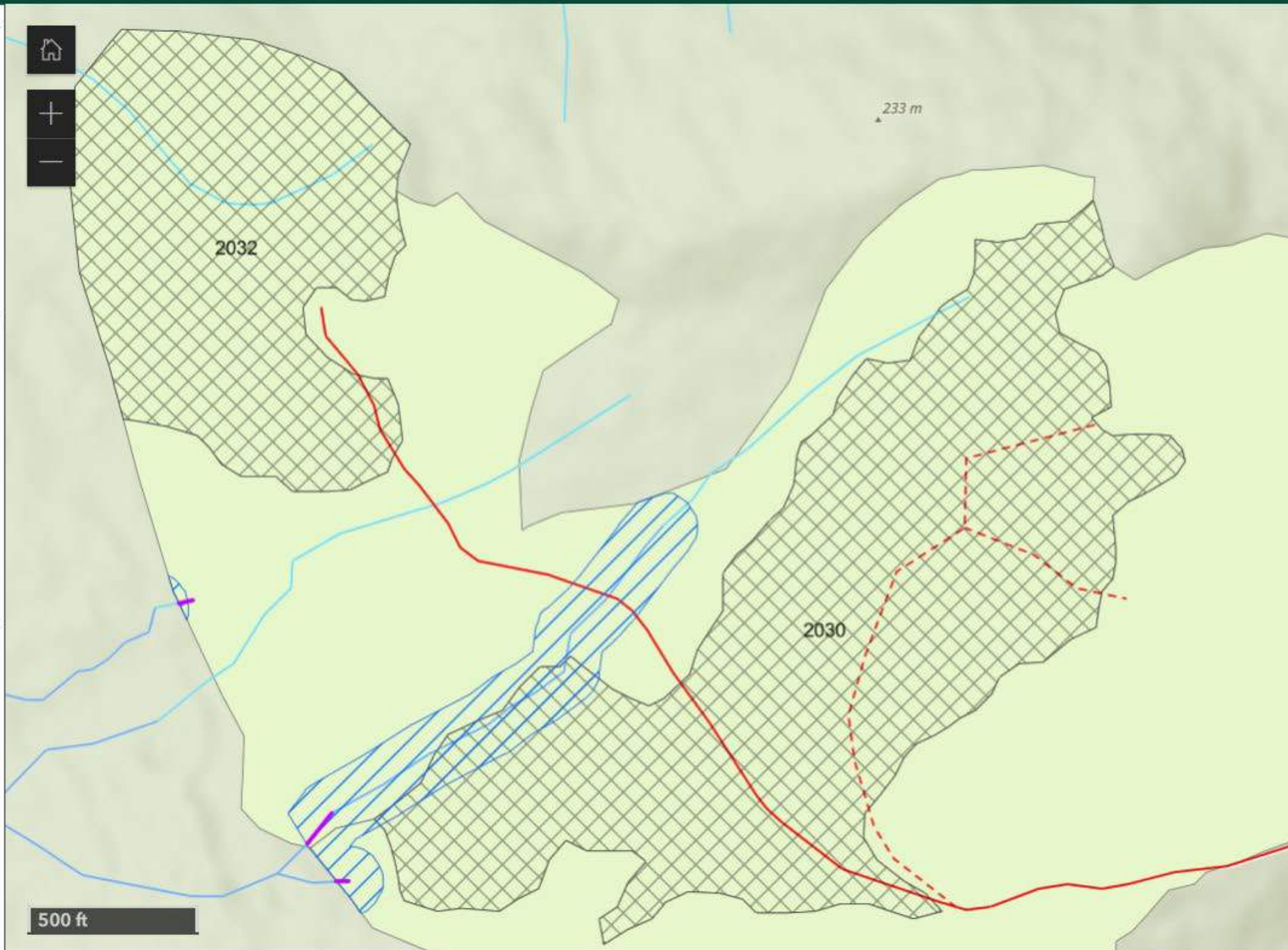


Table 3. Southern Tongass cumulative merchantable and economic volume (MMBF) by working basin

Red Pipes

District	Basin	2026		2032	
		Area	Volume	Area	Volume
POWRD	Suemez	0	0.0	1	0.0
POWRD	Lancaster	0	0.0	27	0.6
POWRD	S. Harris	802	17.1	2,260	48.8
POWRD	Maybeso	70	1.6	1,140	25.2
POWRD	Coal Bay	0	0.0	0	0.0
POWRD	Karta	0	0.0	0	0.0
POWRD	POW S. Remote	17	0.4	209	4.6
POWRD	Control Lake	241	5.9	974	22.6
POWRD	Staney	611	13.4	2,463	55.2
POWRD	Heceta	984	22.7	3,379	76.2
POWRD	Kos	607	14.2	3,251	72.2
POWRD	Seaotter	161	3.9	221	5.2
POWRD	Naukati	7	0.2	441	9.6
POWRD	Coffman	343	8.0	1,640	37.5
POWRD	Thorne Bay	672	14.3	3,287	72.1
POWRD	Shipley	0	0.0	56	1.2
POWRD	Whale Pass	279	6.4	2,742	61.1

OID_	FID_SASSfrcn	ID	NAME	PROJECT	PROJECTN NOTES	GISAcresPr	FID_L29lmxingid	xingtype	route_no	milepost	date	system	feature
1	29		Shelter Co	2	Shelter Cove IRP	36962.07	588 8340000-1	FishX	8340000	11.252	6/5/2005 0:00	SHE	CP
2	29		Shelter Co	2	Shelter Cove IRP	36962.07	600 8340000-1	FishX	8340000	11.224	6/5/2005 0:00	SHE	CP
3	29		Shelter Co	2	Shelter Cove IRP	36962.07	627 8340000-1	FishX	8340000	10.081	6/5/2005 0:00	SHE	CP
4	29		Shelter Co	2	Shelter Cove IRP	36962.07	574 8340000-0	FishX	8340000	0.929	6/6/2005 0:00	SHE	CP
5	29		Shelter Co	2	Shelter Cove IRP	36962.07	555 8300000-1	FishX	8300000	15.465	6/7/2005 0:00	SHE	CP
6	29		Shelter Co	2	Shelter Cove IRP	36962.07	608 8300000-1	FishX	8300000	15.447	6/6/2005 0:00	SHE	CP
7	29		Shelter Co	2	Shelter Cove IRP	36962.07	581 8300000-1	FishX	8300000	19.007	3/22/2016 0:00	SHE	CP
8	29		Shelter Co	2	Shelter Cove IRP	36962.07	565 8337000-0	FishX	8337000	0.153	6/5/2005 0:00	SHE	CP
9	29		Shelter Co	2	Shelter Cove IRP	36962.07	551 8300000-1	FishX	8300000	18.386	6/7/2005 0:00	SHE	CP
10	29		Shelter Co	2	Shelter Cove IRP	36962.07	570 8300000-1	FishX	8300000	18.082	3/3/2001 0:00	SHE	CP
11	29		Shelter Co	2	Shelter Cove IRP	36962.07	618 8300000-1	FishX	8300000	17.971	3/21/2016 0:00	SHE	CP
12	29		Shelter Co	2	Shelter Cove IRP	36962.07	603 8300000-1	FishX	8300000	13.528	6/6/2005 0:00	SHE	CP

TONGASS ECOLOGICAL RESTORATION 10 YEAR PLAN 2022-2031

Yellow highlighted watershed= priority watershed designation; Green Watershed = Subsistence fisheries monitoring sites; Blue=Invasive Plant Treatments

District	Watershed	Projects	Status	Location	Deliverables	Timeline
ANM/JRD	Cube Cove - Florence Lake/Kathleen Lake/Ward Creek	riparian thinning, stream rest, fish xing removals, wetland restoration	NEPA scoping	Admiralty Island	miles, acres	2022-2026
	Mendenhall/Dredge	stream rest, AOP replacements, pond enhancement	NEPA scoping	Juneau		2023-2028
	Couverden	road-stream connectivity and xing remediation needs; culvert replacement & drivable fords, road reconditioning	Outyear			2023-2025
	Montana Creek	Montana Creek Stewardship Project - OHV and fishing user access water-related issues	Outyear	Juneau		2023-2027
	Neva Lake	Neva Lake Sockeye Salmon Stock Assessment; bridge maintenance on Excursion Inlet bridge	2022-2025	Juneau	sockeye status reports	2022-2025

SASS Forest Management (SASS-FM)

Assessment Tool with Draft Criteria

To ensure standard regulations and applicable laws are incorporated into the Southeast Alaska Sustainability Strategy – Forest Management initiative, an assessment tool was developed to prioritize integrated forest management projects that includes watershed and wildlife habitat restoration, sustainable young-growth harvest, and old-growth harvest for cultural uses and small sales.

The Forest Service developed this tool to inform on what criteria might be used. Suggested criteria would help analyze levels of integration across resource areas, align with the 2016 Tongass Forest Plan, and connect to the Southeast Alaska Sustainability Strategy priorities and readiness. This document will be finalized and turned into an assessment tool after obtaining input, feedback, additions or amendments through the public process, based on input from tribes, partners, industry organizations, and any public feedback.

What are the criteria?

The criteria are broken down into three proposed categories: Resources, Readiness and Added Value.

- **Resources Access to Subsistence** – The activity results in improving access to subsistence resources by road, water, or trail.
- **Subsistence Habitat**– The activity results in available, terrestrial subsistence habitat due to wildlife and/or pre-commercial thinning.
- **Priority Watershed** – A portion of the project area is identified as a priority by the Tongass Watershed Condition Framework, a local community or a tribal organization.
- **Water Condition Classification Score** – The score of a watershed’s condition based on biological and physical conditions.
- **Complexity of Logistics** - The activity’s proximity to a road system connected to a nearby community.

- **Fish Habitat Fragmentation** – The number of miles of fish bearing streams above Red crossings (Red crossing do not meet fish passage standards).
- **Risk to Instream Wood** - The habitat condition and potential need for installation of large, woody debris in fish streams.
- **Winter Habitat (Deer)** - The percentage of the project area with opportunity and need for deer winter habitat restoration.
- **Past Timber Harvest Impacts** – The percentage of the project area with un-thinned young growth and past timber harvest.
- **Un-thinned Young Growth (10-30 years)** - The amount of unthinned YG within the 10–30-year window of age.

Readiness

- **Commercial Young Growth Potential** – Is there acreage of suitable young growth and a nearby mill or processing facility?
- **Young Growth Volume by 2026** - Is there significant quantities of merchantable (20,500 board feet/acre) young growth for commercial harvest?
- **Community Based Industry** – Is the project close to an export site or existing manufacturing site?
- **Stream Restoration** - Are current stream restoration projects in some level of planning, design, or implementation?
- **Aquatic Organism Passage** - Are current AOP remediation projects in some level of planning, design, or implementation?
- **Pre-Commercial Thinning Urgency** – Are most of the unthinned acres in the project area 25 years or older?

- **Tribal Partnership** - Are any tribal organizations actively involved in the planning and implementation?
- **Invasive Species** – Are there current treatments underway or invasive plant species already identified in the area?
- **District Support** - Are the staff of the local Ranger district ready and able to take on the work?
- **Partnerships** - Are any partner organizations actively involved in the planning and implementation?

Added Value

- Is there a timber operator in the area?
- Is there an admin site facility in the area?
- Is there Old Growth harvest potential?
- Is biomass opportunity connected to a community?
- Is there stakeholder engagement?
- Is there access to roads & log transfer facilities?
- Does it promote workforce development?
- Is there high fish production in the area?

Priority Project examples

The projects below would score high on the ten-year priority list, based on the draft criteria. Their summaries of criteria are provided to help demonstrate how they could achieve a high rating by meeting many of the criteria, but do not include every aspect of the project.

Central Kupreanof Project

Petersburg Ranger District

Within the boundaries of Keex Kwaan Forest Partnership with support from local tribes and landowners; 71 Red crossings and 130 blocked culverts; 2,100 acres of pre-commercial thinning for stand and wildlife habitat improvement; 717 acres of pre-commercial thinning for fish habitat improvement; two bridge replacements; road improvement (RD 6328); and commercial young growth opportunities in 2030.

Staney Basin project

Craig/Thorne Bay Ranger District

Includes commercial old growth harvest (611 acres); contains 1,800 acres of commercial young growth opportunity immediately; has 3,200 acres of pre-commercial thinning for stand and wildlife habitat improvement; contains 43 Red crossings and 29 blocked fish culverts; includes four stream restoration activities; as well as planned and ready invasive species treatments.

Corner Bay project

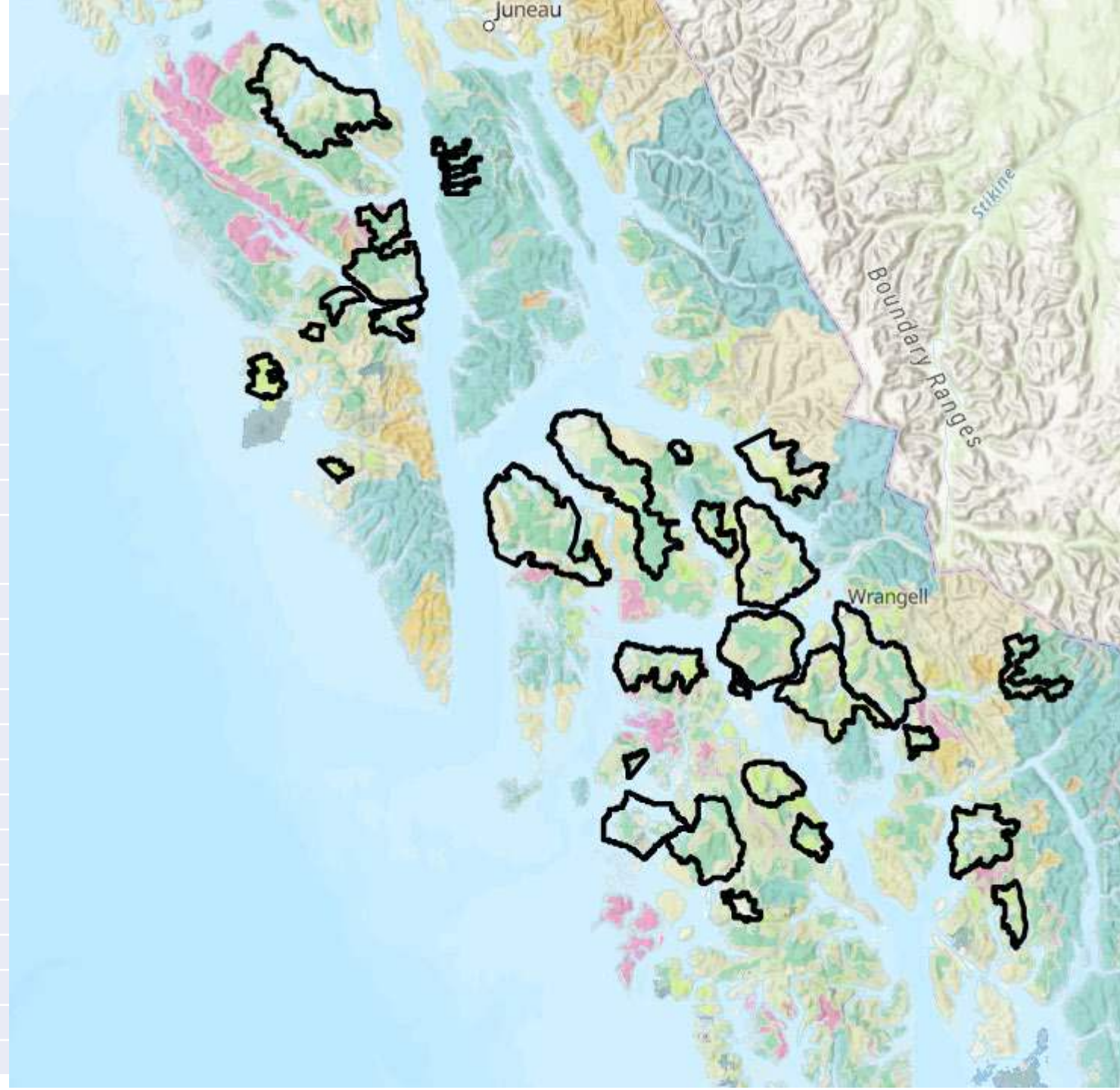
Sitka Ranger District

Contains 100+ acres of commercial young growth opportunity in the next 5-10 years; has 1,700 acres of pre-commercial thinning for stand and wildlife habitat improvement; has 802 acres of pre-commercial thinning for fish habitat improvement; contains 83 Red crossings; includes one bridge replacement and 0.5 miles of instream restoration; as well as a connection to an extensive road system and a Tenakee Springs timber operator nearby.

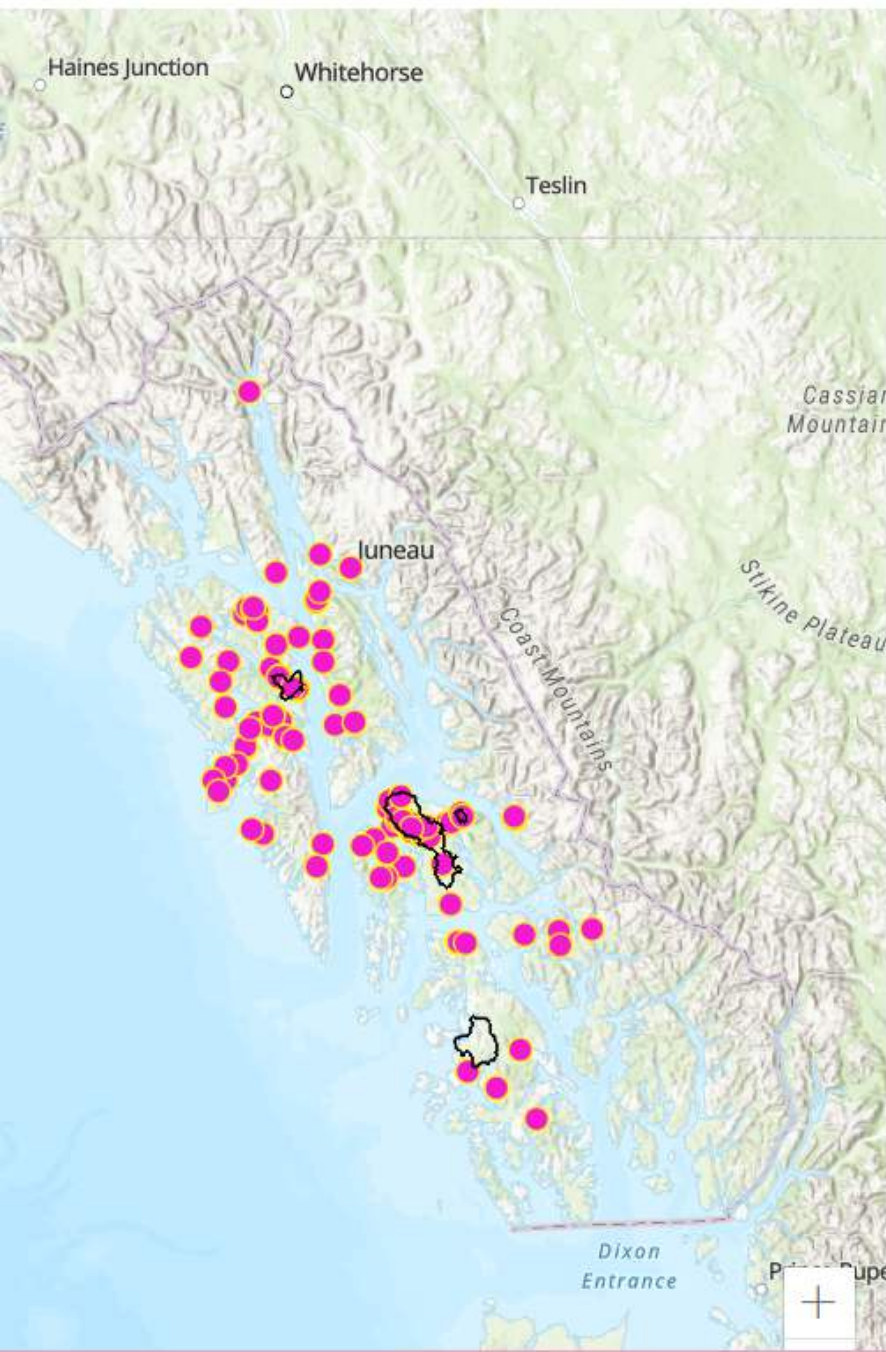
<p>RESOURCE VALUES</p>	<p>Access to Subsistence</p>	<p>The trend in access to subsistence resources by road, water, or trail through stream crossing, road, trail, cabin, or marine access construction, maintenance, or removal resulting from all activities associated with the project.</p> <ul style="list-style-type: none"> * Measured as improves, remains the same, and declines. * This measure is important for adding priority to projects whose activities have a net result of improved access to subsistence resources such as road maintenance or construction, stream crossing replacements, or boat access improvements. 	<p>The activity results in improving road, water, or trail access to communities' priority subsistence resource areas.</p>
	<p>Restoration of Subsistence Habitat</p>	<p>The net trend in available habitat associated with terrestrial subsistence resources resulting from harvest and/or restoration activities across the project area.</p> <ul style="list-style-type: none"> *Measured as improves, maintains, declines *This measure adds priority to projects that have a net gain in subsistence habitat through wildlife and pre commercial thinning or other habitat improvement measures. 	<p>This activity results in an overall increase in terrestrial habitat that will likely benefit subsistence species.</p>
	<p>Deer Winter Habitat Opportunity</p>	<p>Percent of project area with deer winter habitat restoration opportunity and need.</p> <ul style="list-style-type: none"> * Deer are a key resource for our communities * Deer populations concerns have been expressed * Severe winters are population limiting * Winter habitat is a key factor of sustaining populations <p>Scores below are based on Acres of young growth that would qualify as deer winter habitat in prior to harvest, divided by total project area acres, multiplied by 100,000.</p> <p>2 - project area over 300. 1 - project area 51 to 300. 0 - project area 0 to 50.</p>	<p>The percentage of the project area with opportunity and need for deer winter habitat restoration.</p>
	<p>Past Timber Harvest Impacts/need</p>	<p>Percent of the project area with unthinned young growth</p> <ul style="list-style-type: none"> * To factor in past timber harvest impacts and forest restoration need <p>2 - project area contains over 20 percent. 1 - project area contains 5 tp 20 percent 0 - project area contains 0 to 4 percent.</p>	<p>The percentage of the project area with unthinned young growth and past timber harvest.</p>
	<p>All Unthinned YG acres 10-30 Age Class</p>	<p>This measure looks at how many total acres there are of young growth forest in the project boundary that is unthinned and between the ages of 10-30</p> <ul style="list-style-type: none"> * Defined based on how many total acres of unthinned young growth falls within the project area within the thinning window. * The goal of the Tongass is to precommercially thin all young growth, within the thinning window, in order to minimize slash and ensure that our young growth forests are not stagnation, providing understory vegetation, are more resilient to climate change and 	<p>The amount of unthinned YG within the 10–30-year window of age.</p>

Internal IDT project list (ranked)

Project Title	SCORE
Central Kupreanof IRP, Kake IRP, Portage Bay, IRP	44
North Revilla IRP	42
Staney Basin IRP	42
Game Creek IRP	41
Blind Slough/Mitkof/Sumner IRP	38
Corner Bay IRP	38
False Island Road System	38
Luck Lake IRP	38
Thorne Bay/North Thorne Bay Basin IRP	37
Yakutat Salmon Partners	36
North Kuiu IRP	35
Prince of Wales Islandwide Progressive Road Maintenance	32
Wrangell IRP	32
Klawock Lake IRP	31
Hamlin Creek (Kosiusko Island)	29
Zarembo IRP	29
Etolin and Starfish Basin IRP	27
Appleton IRP	26
Thomas Bay IRP	26
Heceta IRP	24
Tonka IRP	21
Fish Bay IRP	15
Frosty IRP	15
Kizhuchia Creek IRP	14
Bushy IRP/Shrubby IRP	9



Click on a point to view the comment in a pop up.



Example Projects

Corner Bay Project

Location: Sitka Ranger District

The Corner Bay Project on the Sitka Ranger District contains 100+ acres of commercial young growth opportunity in the next 5-10 years; has 1,700 acres of pre-commercial thinning for stand and wildlife habitat improvement; includes 802 acres of pre-commercial thinning for fish habitat improvement; features 83 Red crossings; includes one bridge replacement and 0.5 miles of instream restoration; as well as a connection to an extensive road system and a Tenakee Springs timber operator nearby.

Staney Project

Location: Craig/Thorne Bay Ranger District

The Staney Basin Project on the Craig/Thorne Bay Ranger District includes commercial old growth harvest (611 acres) within three years; contains 1,800 acres of commercial young growth opportunity immediately; has 3,200 acres of pre-commercial thinning for stand and wildlife habitat improvement; contains 43 Red crossings and 29 blocked fish culverts; includes four stream restoration activities; as well as planned and ready invasive species treatments.

Central Kupreanof Project

Location: Petersburg Ranger District

The Central Kupreanof Project on the Petersburg Ranger District falls within the boundaries of the Keex Kwaan Forest Partnership with support from local tribes and

Project Proposals Received

Select a proposal below to find the related location on the map.

On the Corner Bay road system there is still a lot of damage from the 2020 floods that has not been addressed. Also, the last 6 miles of road has not been brushed and is now inaccessible and overgrown. This deferred maintenance must be finally addressed.

Name: Ketchikan Watershed Restoration

Location: Margaret Creek, Sprout Creek,

Ketchikan Integrated Activities: Support the ongoing efforts to develop and employ a watershed stewardship crew with Ketchikan Indian Community (KIC) using the community forest partnership model. An ongoing partnership has restored fish habitat in Margaret Creek Watershed and in Ward Creek on Revillagigedo Island.

Name: Klawock Lake Watershed Streams

Restoration Location: Hatchery Creek, Alder

Creek, Chutes and Ladders, Salmon Salad,

and other surrounding streams in the

Klawock Lake Watershed. Integrated

Activities: Past logging activities that

removed riparian trees have degraded

riparian function and instream fish habitat

throughout Klawock Lake watershed. The

2016 Klawock Lake Sockeye Salmon Action

Plan plan identified and prioritized many

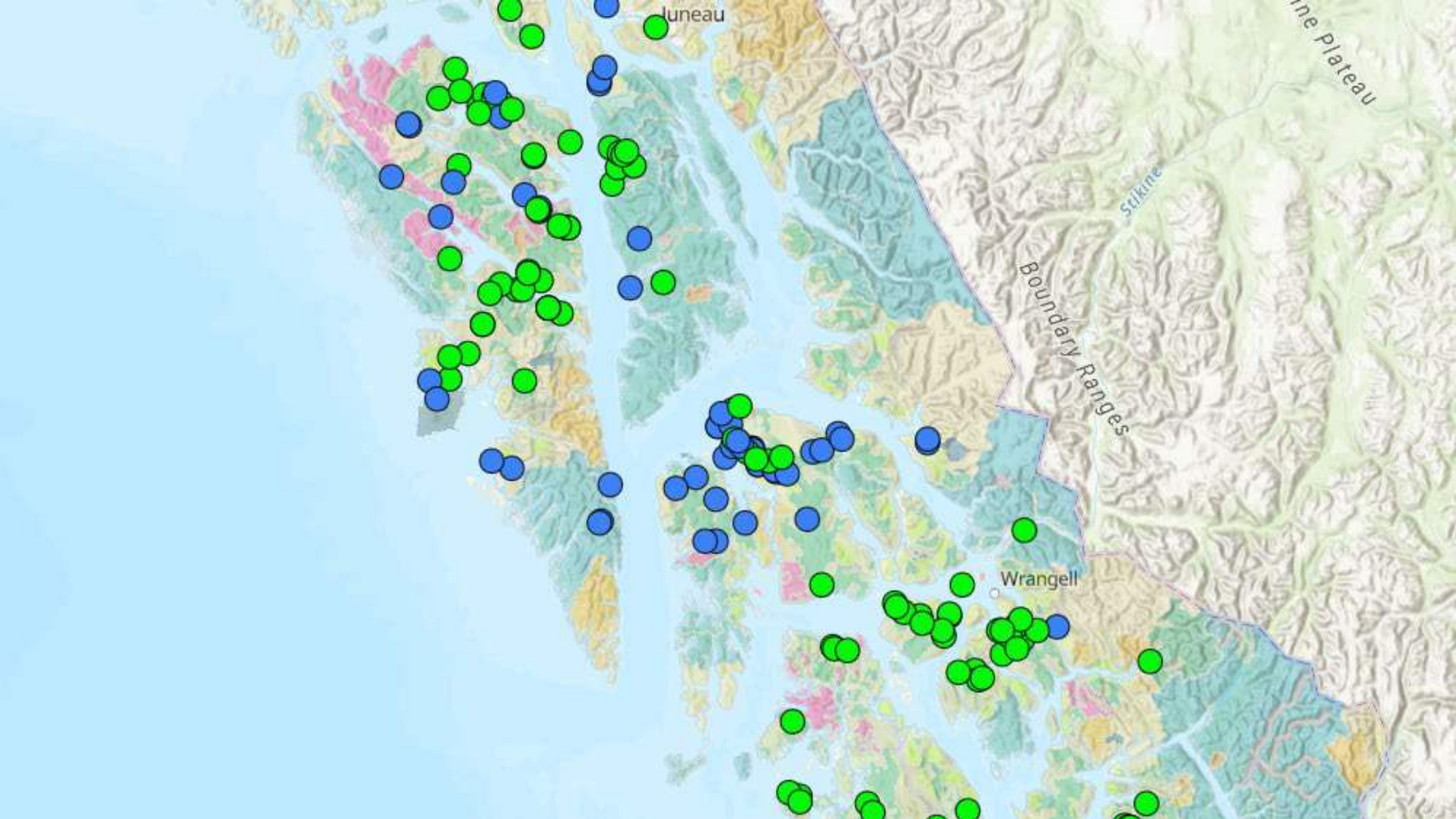
Input/Id Management

Recreational fishing, and many other opportunities for local use (why Lower 48??), such as like portable

Give responsible business owners and boroughs to help the system in place and business. Southeast Alaska waste planned vessels and boats areas and no Southeast Alaska develop a plan for the health of all Southeast

I am concerned about the possibility of drought periods and response plan to address the risk time periods.

The design of biomass/chips with public outreach and collaboration. get out of control for export



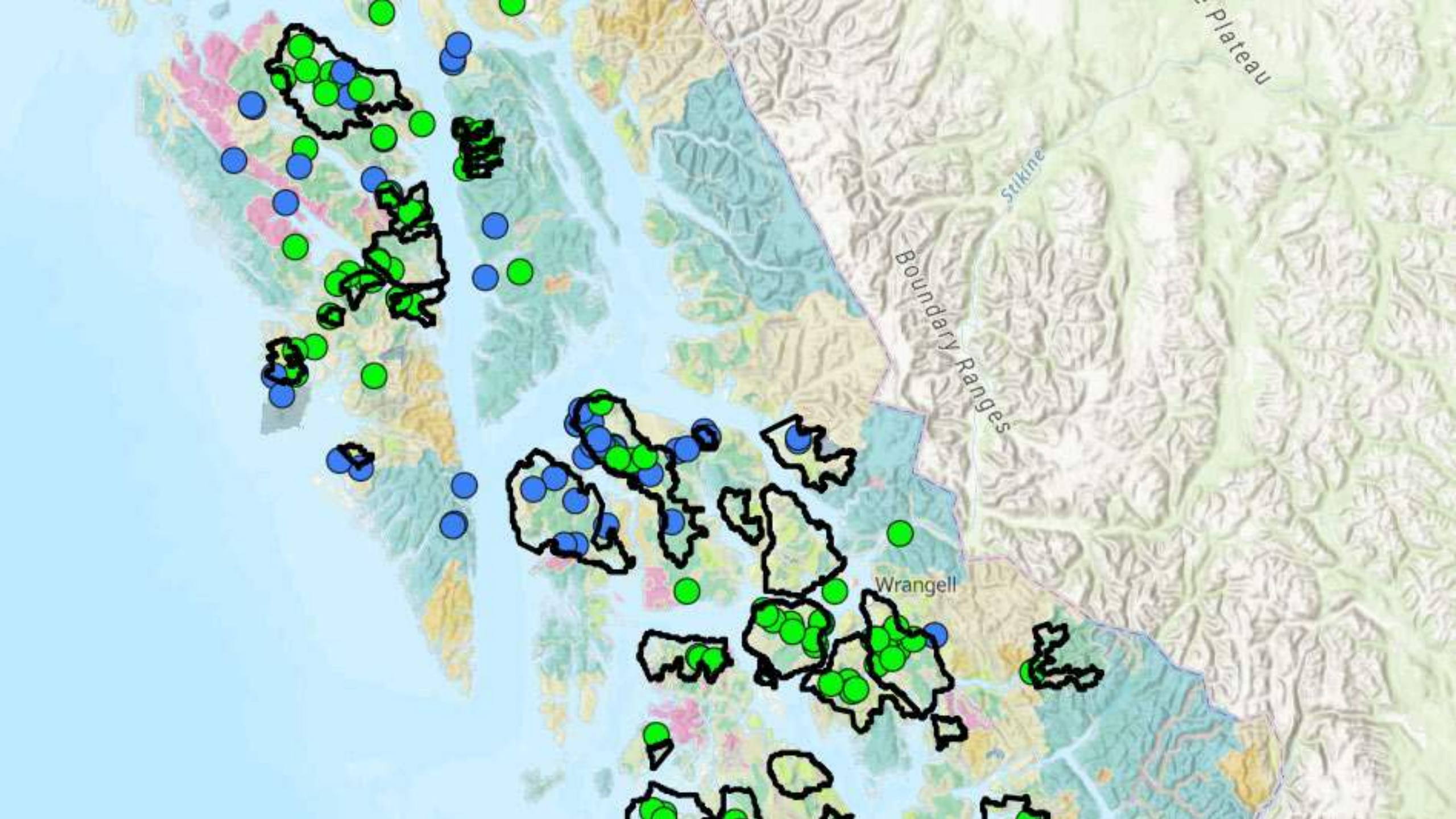
Juneau

the plateau

Stikine

Boundary Ranges

Wrangell



Project Title	Project Area	Proposed Activities	Opportunity for Activity (Y/N)	comments	Estimated Volume/Area/Number	Potential timing	Estimated Budget	Stakeholders	Challenges	Conflicts?
Etolin/Starfish IRP	Etolin Island (central road system)	PCT for stand improvement/wildlife habitat improvement (Development LUD)	Yes		2000 acres	Soon	\$1,000/acres	ADNR	Funding/Workforce capacity, contracting work	No
		PCT in riparian areas for fish habitat (Flat creek/Trib to Flat creek, Trib Mosman inlet)	Yes		252 acres	Soon	\$1,000/acres	Wrangell Cooperative Association		
		retaining/improving wildlife movement corridors and deer winter range	Yes		Significant pending past work	Soon	\$1,000/acres	ANSCA Corporations		
		removing culled material around landings	Yes per needs		in YG stands			ADF&G		
		repairing old skid trails with recontouring	Yes per needs		minimal			USFWS		
		invasive species treatments for high priority species	Yes		29 acres	Now	\$500/acre	SAF		
		targeted native plant restoration	Yes		associated with instream work			Timber Industry		
		AOP repair			11 red pipes, 75 blocked crossings; 6540-0.332, 6540-	2 FY24; 11 Fy26		Conservation Organizations		
		road storage/closure	Yes		road decomm (detailer creek, prince creek)	decomm road, stored		SWCD		
		road maintenance/brushing for access	Yes		bridge abut (6540-7.716 for brushed creek)	bridge FY24; Rd Mtc FY24		BIA		
		nepa clear old growth and young growth volume previously identified in the CTLLA	yes		OG -2030 ac/32 mmbf					
		prioritize IFM (timber harvest, road construction and maintenance, timber stand improvement, wildlife and fish habitat improvement, invasive species treatments and recreation management.								
		commit to providing the 5 mmbf of OG to support the local mills timber supply should include salvage of insect and disease killed and windthrown timber.			can't commit - 5 mmbf is TNF-wide					
		Fix and maintain dock / MAF at Anita Bay for IFM and recreation activities								
		Tie in road access from the existing Anita Bay road system to the Burnett Inlett hatchery to support the fishing industry, the hatchery and the economy of Wrangell								
Volume cleared WRD roadside				0.5 mmf/year	Now					

SASS Forest Management (SASS-FM)

Assessment Tool with Draft Criteria

To ensure standard regulations and applicable laws are incorporated into the Southeast Alaska Sustainability Strategy – Forest Management initiative, an assessment tool was developed to prioritize integrated forest management projects that includes watershed and wildlife habitat restoration, sustainable young-growth harvest, and old-growth harvest for cultural uses and small sales.

A central principle of SASS is climate resilience. Climate resilience is planning, preparing, and responding to hazardous events, trends, or disturbances related to the changing climate. This involves anticipating how climate change will create new or alter current climate-related risks. SASS-FM projects are designed to respond to anticipated changes in climate that affect biological and physical processes to lower long-term risk.

The Forest Service developed this tool to inform on what criteria might be used. Suggested criteria would help analyze levels of integration across resource areas, align with the 2016 Tongass Forest Plan, and connect to the Southeast Alaska Sustainability Strategy priorities and readiness. This document will be finalized and turned into an assessment tool after obtaining input, feedback, additions or amendments through the public process, based on input from tribes, partners, industry organizations, and any public feedback.

What are the criteria?

The criteria are broken down into three proposed categories: Resources, Readiness and Added Value.

Resources

- **Access to Subsistence** - The activity results in improving road, water, or trail access to communities' priority subsistence resource areas.
- **Restoration of Subsistence Habitat** - This activity results in an overall increase in terrestrial habitat that will likely benefit subsistence species.
- **Winter Habitat (Deer)** - The percentage of the project area with opportunity and need for deer winter habitat restoration.

- **Past Timber Harvest Impacts** - The percentage of the project area with unthinned young growth and past timber harvest.
- **Unthinned Young Growth (10-30 years)** - The amount of unthinned YG within the 10–30-year window of age.
- **Economic Young Growth Potential** - Is the project in a basin identified as economically feasible?
- **Priority Watershed** - A portion of the project area is identified as a priority by either the Tongass Watershed Condition Framework, a local community, or a tribal organization.
- **Watershed Condition Classification Score** - The score of a watershed's condition based on biological and physical conditions.
- **Fish Habitat Fragmentation** - The number of miles of fish bearing streams above Red crossings (Red crossings do not meet fish passage standards).
- **Salmon Production** - Activities are focused in watersheds with the highest potential productivity and diversity of salmon.
- **Risk to Instream Wood** - The habitat condition and potential need for installation of large, woody debris in fish streams.
- **Complexity of Logistics** - The activity's proximity to a road system connected to a nearby community.
- **Community-based Forest Cooperative** - Does this project help support existing community-based forestry initiatives or help with the development of new ones?
- **Cultural Trees and Products** - Will this project provide for cultural trees and products such as totem poles, canoes, or tribal artisan uses?
- **Small-sale Old Growth Potential** - Is there acreage of suitable old growth that would provide opportunity for small operators

and/or provide cultural wood?

Readiness

- **Pre-Commercial Thinning Urgency** - Are most of the unthinned acres in the project area 25 years or older?
- **Young Growth Volume by 2026** - Are there significant quantities of merchantable (20,500 board feet/acre) young growth for commercial harvest?
- **Community Based Timber Industry** - Is the project close to an export site or existing manufacturing site?
- **Transportation System** - The road system could be reconstructed to use for the project.
- **Invasive Species** - Are there current treatments underway or invasive plant species already identified in the area?
- **Instream Restoration Opportunities (Stream Restoration)** - Are current stream restoration projects in some level of planning, design, or implementation?
- **Aquatic Organism Passage (AOP)** - Are current AOP remediation projects in some level of planning, design, or implementation?
- **District-level Support** - Are the staff of the local Ranger district ready and able to take on the work?
- **Responsive to Community** - Have the community and Forest Service been engaged

Additional Project Considerations

The public offered a variety of suggestions for potential projects and considerations for project design. Many suggestions were integrated into project consideration criteria as described above. Other suggestions more unique to particular projects may be considered at a project or unit level, such as the suggestions below:

- Is there planned road maintenance occurring in the area of invasive plants treatments?
- Wildlife habitat thinning slash impacts – Slash concerns should increase Rx elements to address or consider slash removal via commercial thinning.
- Project includes thinning to accelerate return to old-growth conditions and facilitate wildlife travel between old-growth reserves, improving connectivity and reducing fragmentation.

on proposed projects in this area?

- **Partnerships** - Are any partner organizations actively involved in the planning and implementation?
- **Tribal Partnerships** - Are any tribal organizations actively involved in the planning and implementation?

Added Values

- Is there a timber operator in the area?
- Is there an admin site facility in the area?
- Is there access to infrastructure (roads & log transfer facilities)?
- Is biomass opportunity connected to a community?
- Are proposed habitat improvement / restoration activities in or adjacent to areas with documented subsistence use?
- Would there be opportunity for workforce development?
- Is there an opportunity for recreation infrastructure investment or improvement?
- Are there specific project objectives that provide for carbon storage and expand climate resiliency.
- Is the project adjacent to other impacted ownerships where restoration activities may occur?

Project Title	SCORE	FINAL SCORE WITH PUBLIC INPUT	
Central Kupreanof IRP, Kake IRP, Portage Bay, IRP	44	Central Kupreanof IRP, Kake IRP, Portage Bay, IRP	56
North Revilla IRP	42	Staney Basin IRP	54
Staney Basin IRP	42	Game Creek IRP	53
Game Creek IRP	41	North Kuiu IRP	53
Blind Slough/Mitkof/Sumner IRP	38	Thorne Bay/North Thorne Bay Basin IRP	52
Corner Bay IRP	38	Luck Lake IRP	51
False Island Road System	38	North Revilla IRP	50
Luck Lake IRP	38	Yakutat Salmon Partners	49
Thorne Bay/North Thorne Bay Basin IRP	37	Prince of Wales Islandwide Progressive Road Maintenance	49
Yakutat Salmon Partners	36	Wrangell IRP	48
North Kuiu IRP	35	Zarembo IRP	47
Prince of Wales Islandwide Progressive Road Maintenance	32	Blind Slough/Mitkof/Sumner IRP	45
Wrangell IRP	32	Corner Bay IRP	45
Klawock Lake IRP	31	Hamlin Creek (Kosiusko Island)	45
Hamlin Creek (Kosiusko Island)	29	Shelter Cove	45
Zarembo IRP	29	False Island Road System	44
Etolin and Starfish Basin IRP	27	Etolin and Starfish Basin IRP	43
Appleton IRP	26	Red Bay	43
Thomas Bay IRP	26	Klawock Lake IRP	42
Heceta IRP	24	Thomas Bay IRP	41
Tonka IRP	21	Admiralty Island (Cube Cove)	40
Fish Bay IRP	15	Tonka IRP	36
Frosty IRP	15	Heceta IRP	34
Kizhuchia Creek IRP	14	Appleton IRP	31
Bushy IRP/Shrubby IRP	9	Frosty IRP	30
		Kruzof Island	30
		Hanus Bay	26
		Fish Bay IRP	19
		Kizhuchia Creek IRP	19
		Bushy IRP/Shrubby IRP	19

